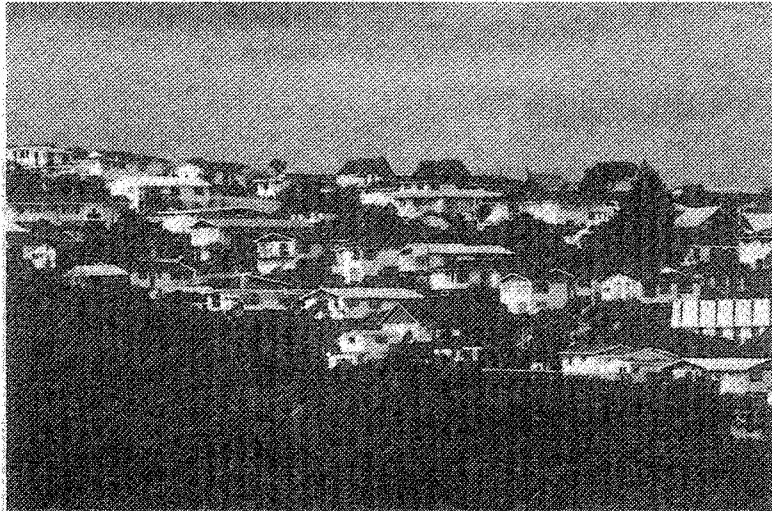


# Silence is golden

Should there be noise control in residential areas?



*Future Resource Management for Lower Hutt*

**Be sure to have your say.**



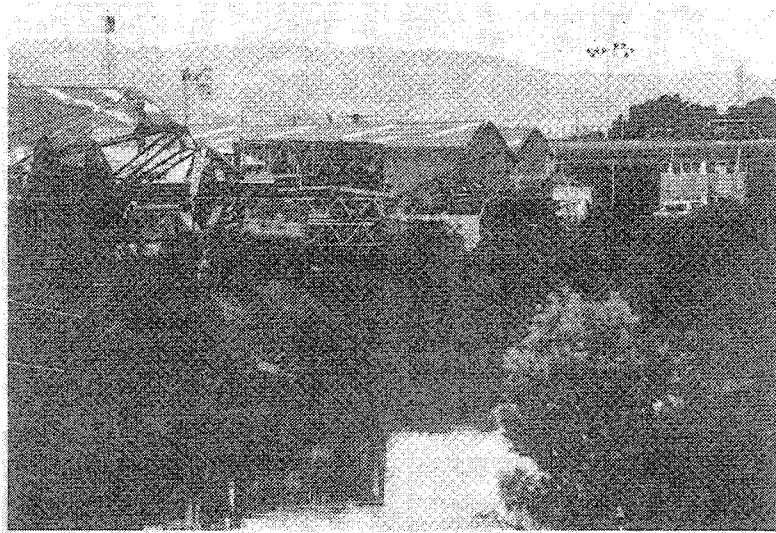
THE HUTT  
CITY COUNCIL



HRA 0409

# By a wandering brook

What limitations should be placed on  
the activities around our natural resources?



*Future Resource Management for Lower Hutt*

**Be sure to have your say.**



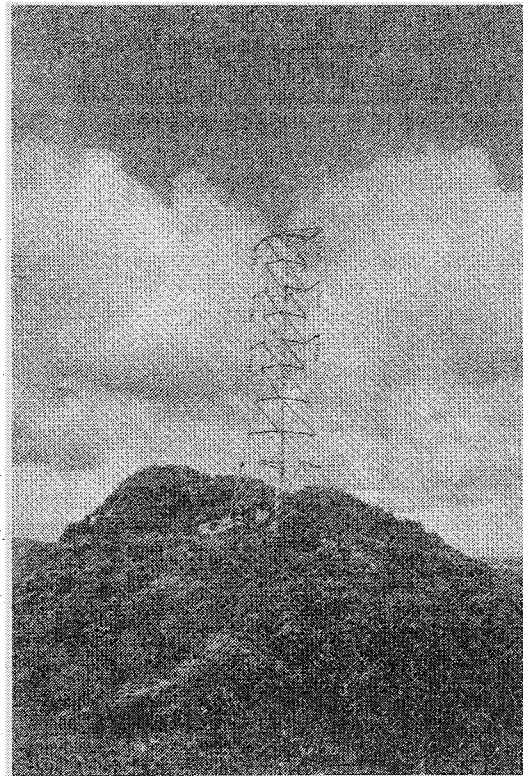
THE HUTT  
CITY COUNCIL



HRA 0410

# In the shadow of the pylon

How can the visual impact  
of essential services be reduced?

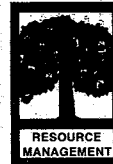


*Future Resource Management  
for Lower Hutt*

**Be sure to have your say.**



THE HUTT  
CITY COUNCIL



HRA 0411

# Sign of the times

How can we accommodate environmental quality and commercial profile?



*Future Resource Management for Lower Hutt*

**Be sure to have your say.**

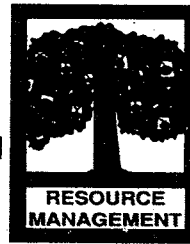


THE HUTT  
CITY COUNCIL



## **Planning the city's future**

Your chance to help ensure the city strikes a balance between development and preserving the environment is now.....



**Pages 8&9**

# Love thy neighbour.

How close is too close for comfort?



*Future Resource Management  
for Lower Hutt*

**Be sure to have your say.**



THE HUTT  
CITY COUNCIL



---

# THE Huttenews<sup>®</sup>

PHONE 566-3125 / FAX 566-5485

TUESDAY, OCTOBER 20, 1992

**Working neighbours.  
Which home occupations should  
be allowed in residential areas?**



*Future Resource Management  
for Lower Hutt*

**Be sure to have your say.**



THE HUTT  
CITY COUNCIL



# Front yard or car yard?

How many off-street car parking spaces should be provided for residential properties?



*Future Resource Management for Lower Hutt*

**Be sure to have your say.**



THE HUTT  
CITY COUNCIL

HRA 0306

